

# FACT SHEET UNINSURED ADULTS

Mississippi County-Level Data

PUBLISHED AUGUST 2012

This fact sheet presents the number and percentage of non-elderly uninsured adults at the county level in Mississippi, highlighting groups who may be eligible for premium subsidies through a Health Insurance Exchange or coverage through the expansion of Medicaid authorized under the Affordable Care Act (ACA). The ACA provides for premium tax credits for persons with household incomes between 100 percent and 400 percent of the federal poverty level (FPL) and gives states the option to expand Medicaid to persons with household incomes up to 138 percent FPL, beginning in 2014. All data are from the 2009 Small Area Health Insurance Estimates (SAHIE), United States Census Bureau.

**NON-ELDERLY ADULTS**

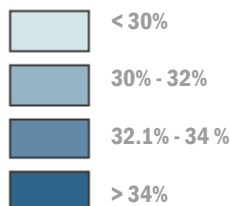
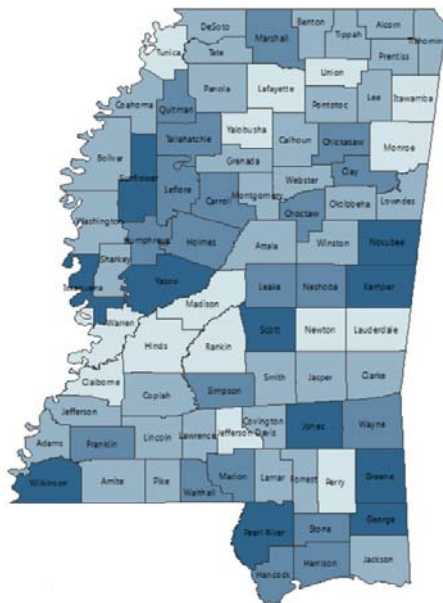
"Adults" as used in this document refers to non-elderly adults 18 - 64 years of age.

**INCOMES ASSOCIATED WITH 2012 FEDERAL POVERTY PERCENTAGES**

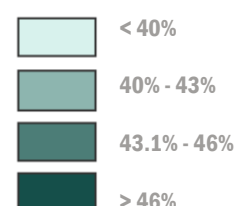
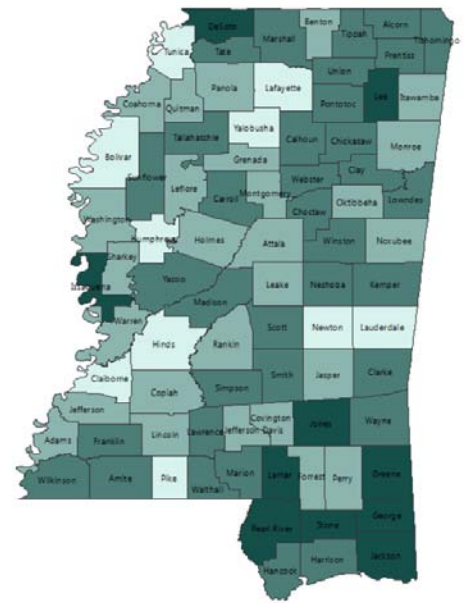
% FEDERAL POVERTY LEVEL	SINGLE	FAMILY OF FOUR
138%	\$15,415	\$31,809
400%	\$44,680	\$92,200

Source: The poverty guidelines updated periodically in the Federal Register by the U.S. Department of Health and Human Services under the authority of 42 USC 9002(2).

**PERCENTAGE OF UNINSURED ADULTS UNDER 400% FPL**



**PERCENTAGE OF UNINSURED ADULTS UNDER 138% FPL**

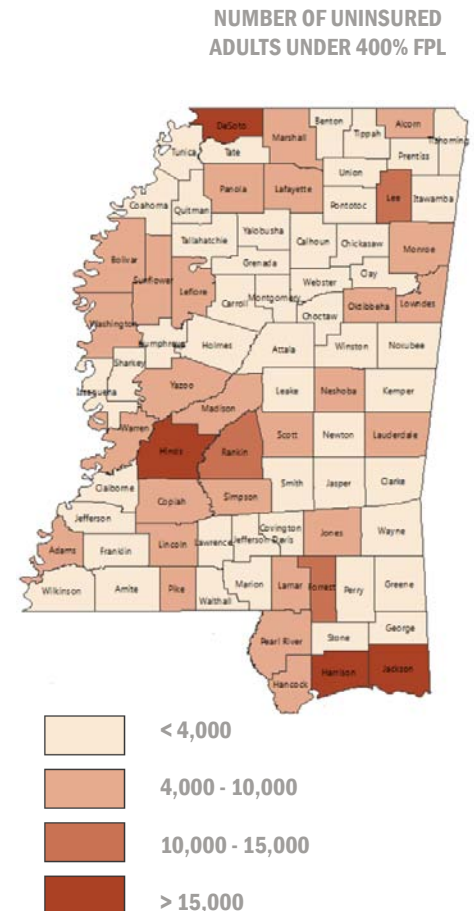


# Uninsured Adults Under 400% of the Federal Poverty Level by County

COUNTY	Number of Uninsured Adults 18-64 ≤ 400% FPL	Percentage of Uninsured Adults 18-64 ≤ 400% FPL
Adams	4,019	30.5
Alcorn	4,836	30.5
Amite	1,857	31.5
Attala	2,664	30.9
Benton	1,168	31.2
Bolivar	5,449	30.9
Calhoun	2,122	32.0
Carroll	1,501	32.5
Chickasaw	2,916	33.4
Choctaw	1,323	32.3
Claiborne	1,575	27.8
Clarke	2,357	31.9
Clay	3,065	32.9
Coahoma	3,911	31.8
Copiah	4,038	30.2
Covington	2,875	30.9
DeSoto	16,968	30.7
Forrest	11,753	31.0
Franklin	1,182	32.2
George	3,108	34.1
Greene	2,576	36.4
Grenada	3,151	31.3
Hancock	5,670	32.9
Harrison	25,351	33.0
Hinds	30,454	28.8
Holmes	3,164	32.3
Humphreys	1,552	32.5
Issaquena	329	37.3
Itawamba	3,077	29.6
Jackson	16,394	31.6
Jasper	2,409	30.1
Jefferson	1,481	31.7
Jefferson Davis	1,734	29.6
Jones	9,903	34.1
Kemper	1,698	35.0

COUNTY	Number of Uninsured Adults 18-64 ≤ 400% FPL	Percentage of Uninsured Adults 18-64 ≤ 400% FPL
Lafayette	6,006	30.0
Lamar	5,989	31.7
Lauderdale	9,547	29.3
Lawrence	1,777	31.3
Leake	3,232	33.3
Lee	10,343	31.2
Leflore	5,537	33.5
Lincoln	4,459	30.9
Lowndes	7,936	31.8
Madison	8,342	29.9
Marion	3,593	32.4
Marshall	5,602	32.7
Monroe	4,902	30.0
Montgomery	1,539	31.0
Neshoba	4,440	33.4
Newton	2,864	29.4
Noxubee	1,957	34.7
Oktibbeha	7,135	31.8
Panola	5,074	31.3
Pearl River	8,452	34.2
Perry	1,625	29.1
Pike	5,290	30.6
Pontotoc	3,960	30.4
Prentiss	3,613	30.6
Quitman	1,356	32.8
Rankin	14,714	29.0
Scott	4,781	34.8
Sharkey	813	32.0
Simpson	4,123	32.8
Smith	2,100	30.3
Stone	2,456	32.3
Sunflower	5,363	34.9
Tallahatchie	2,096	33.7
Tate	3,597	30.3
Tippah	3,216	32.0

COUNTY	Number of Uninsured Adults 18-64 ≤ 400% FPL	Percentage of Uninsured Adults 18-64 ≤ 400% FPL
Tishomingo	2,668	31.6
Tunica	1,383	27.7
Union	3,591	29.6
Walthall	2,299	33.0
Warren	5,457	28.9
Washington	7,651	31.0
Wayne	3,037	33.0
Webster	1,363	30.7
Wilkinson	1,716	35.2
Winston	2,662	31.5
Yalobusha	1,814	29.2
Yazoo	4,966	36.5



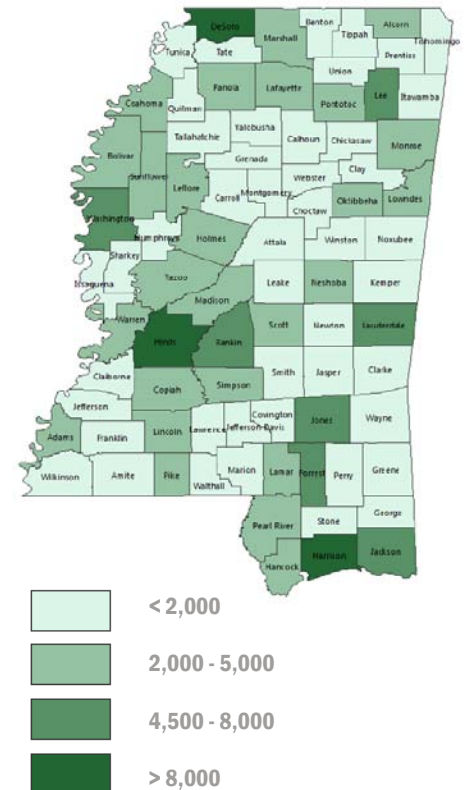
# Uninsured Adults Under 138% of the Federal Poverty Level by County

COUNTY	Number of Uninsured Adults 18-64 ≤ 138% FPL	Percentage of Uninsured Adults 18-64 ≤ 138% FPL
Adams	2,222	40.8
Alcorn	2,540	43.7
Amite	1,017	44.4
Attala	1,452	42.6
Benton	661	42.5
Bolivar	3,273	39.7
Calhoun	1,144	43.5
Carroll	770	45.4
Chickasaw	1,538	44.4
Choctaw	730	45.5
Claiborne	1,047	37.0
Clarke	1,219	45.0
Clay	1,720	45.1
Coahoma	2,376	40.2
Copiah	2,303	41.4
Covington	1,594	42.2
DeSoto	8,046	48.3
Forrest	6,727	41.6
Franklin	644	45.0
George	1,511	48.7
Greene	1,360	51.5
Grenada	1,652	42.4
Hancock	2,749	45.4
Harrison	12,361	45.7
Hinds	16,319	38.6
Holmes	2,071	40.7
Humphreys	985	39.6
Issaquena	193	49.0
Itawamba	1,551	42.6
Jackson	7,485	46.3
Jasper	1,281	41.8
Jefferson	899	41.3
Jefferson Davis	1,005	40.4
Jones	5,366	47.2
Kemper	966	46.0

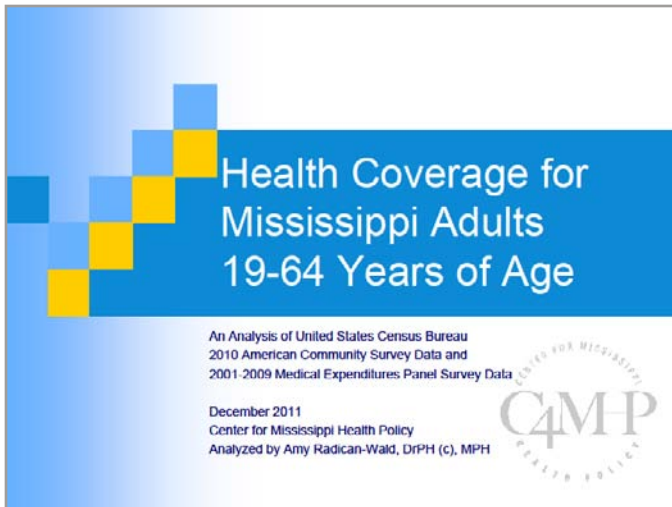
COUNTY	Number of Uninsured Adults 18-64 ≤ 138% FPL	Percentage of Uninsured Adults 18-64 ≤ 138% FPL
Lafayette	3,164	39.5
Lamar	2,861	46.3
Lauderdale	5,022	39.8
Lawrence	940	44.3
Leake	1,693	42.6
Lee	5,341	46.8
Leflore	3,457	42.5
Lincoln	2,210	42.0
Lowndes	4,288	44.4
Madison	3,723	45.1
Marion	1,911	43.6
Marshall	3,092	44.4
Monroe	2,545	41.9
Montgomery	838	42.4
Neshoba	2,326	44.0
Newton	1,462	39.2
Noxubee	1,158	41.2
Oktibbeha	4,409	42.1
Panola	2,841	41.7
Pearl River	4,466	47.3
Perry	876	41.5
Pike	2,882	39.6
Pontotoc	2,048	43.8
Prentiss	1,961	43.7
Quitman	832	41.6
Rankin	6,283	41.9
Scott	2,643	45.7
Sharkey	499	40.7
Simpson	2,242	43.9
Smith	1,067	43.4
Stone	1,334	46.3
Sunflower	3,351	44.2
Tallahatchie	1,244	43.9
Tate	1,866	43.1
Tippah	1,734	43.5

COUNTY	Number of Uninsured Adults 18-64 ≤ 138% FPL	Percentage of Uninsured Adults 18-64 ≤ 138% FPL
Tishomingo	1,391	45.2
Tunica	884	36.5
Union	1,924	43.8
Walthall	1,319	44.8
Warren	2,817	41.2
Washington	4,520	40.4
Wayne	1,626	45.2
Webster	725	43.1
Wilkinson	992	45.3
Winston	1,475	44.3
Yalobusha	996	39.6
Yazoo	2,888	45.7

NUMBER OF UNINSURED ADULTS UNDER 138% FPL



For a detailed profile of health insurance coverage of adults in Mississippi,  
go to [www.mshealthpolicy.com/2010ACS.htm](http://www.mshealthpolicy.com/2010ACS.htm)



# Center *for* Mississippi Health Policy

Plaza Building, Suite 700  
120 N. Congress Street  
Jackson, MS 39201

Phone 601.709.2133  
Fax 601.709.2134

[www.mshealthpolicy.com](http://www.mshealthpolicy.com)