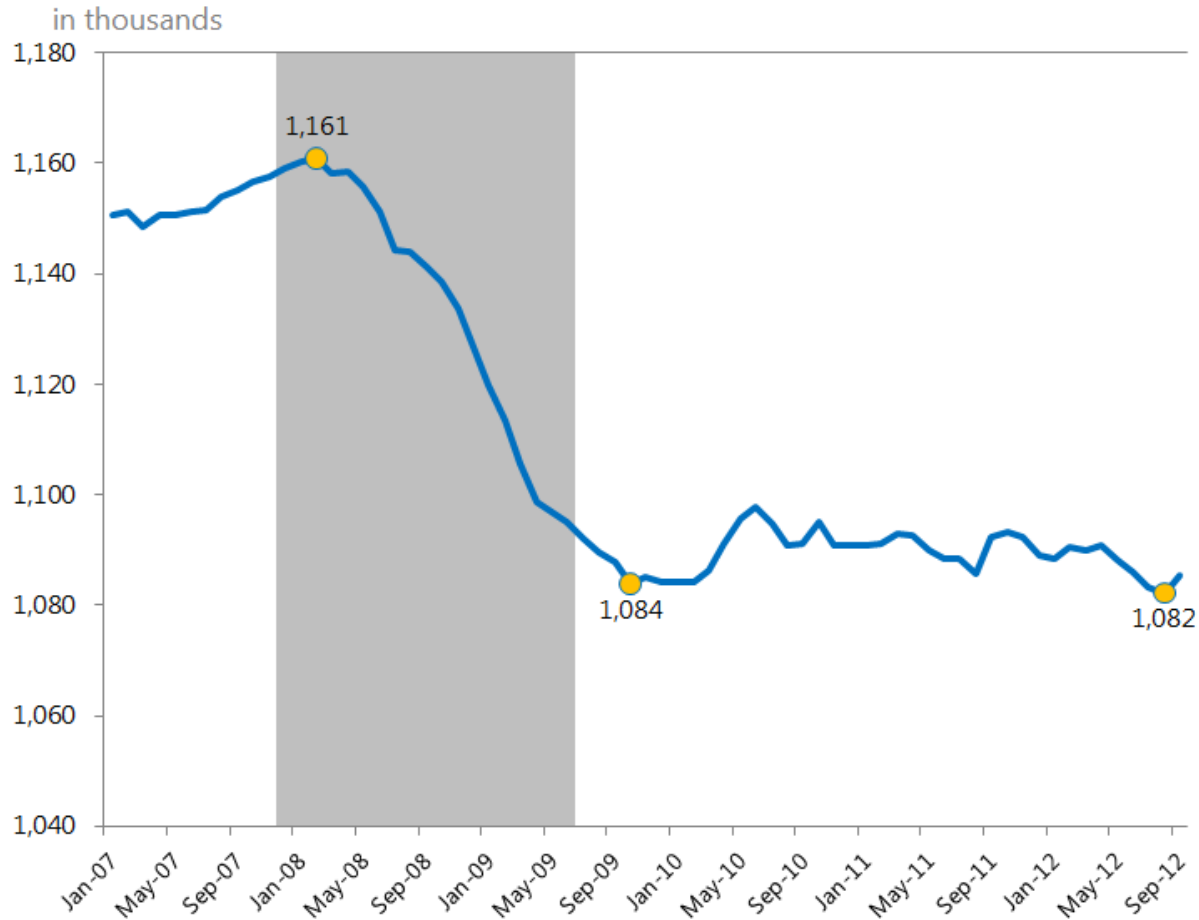


# STATE OF WORKING MISSISSIPPI

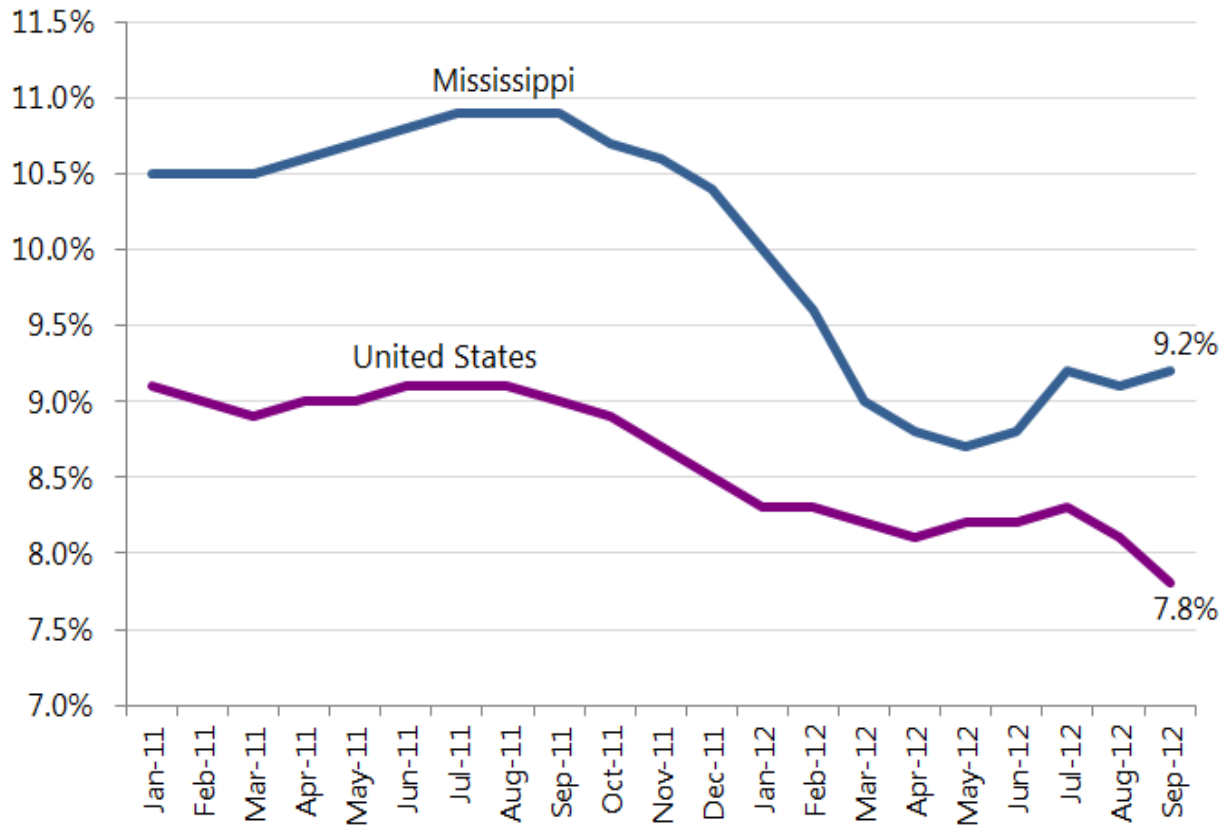
Mississippi Economic Policy Center

October 26, 2012

**MISSISSIPPI EMPLOYMENT FROM JANUARY 2007 TO THE PRESENT**

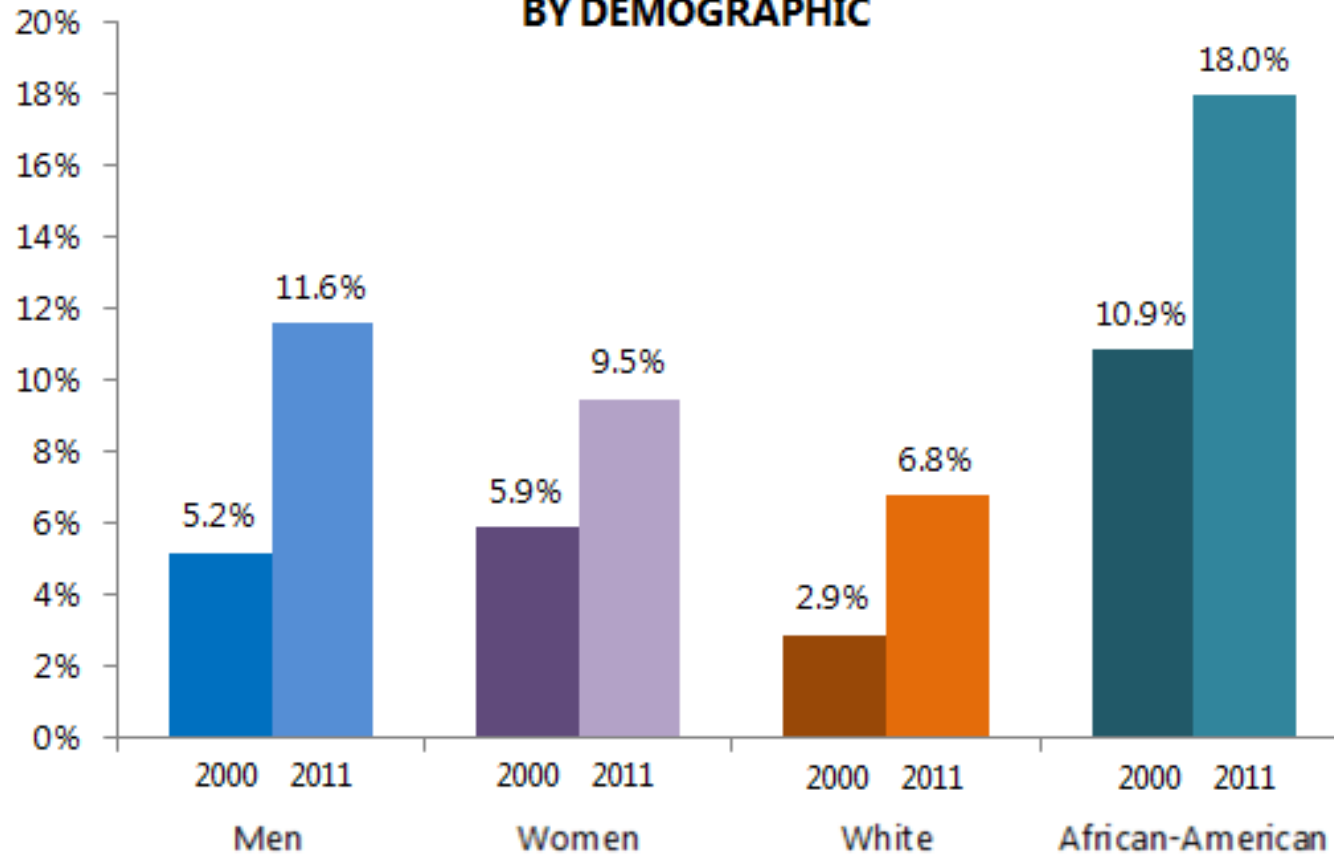


**GAP BETWEEN MISSISSIPPI AND U.S. UNEMPLOYMENT RATE GROWS**

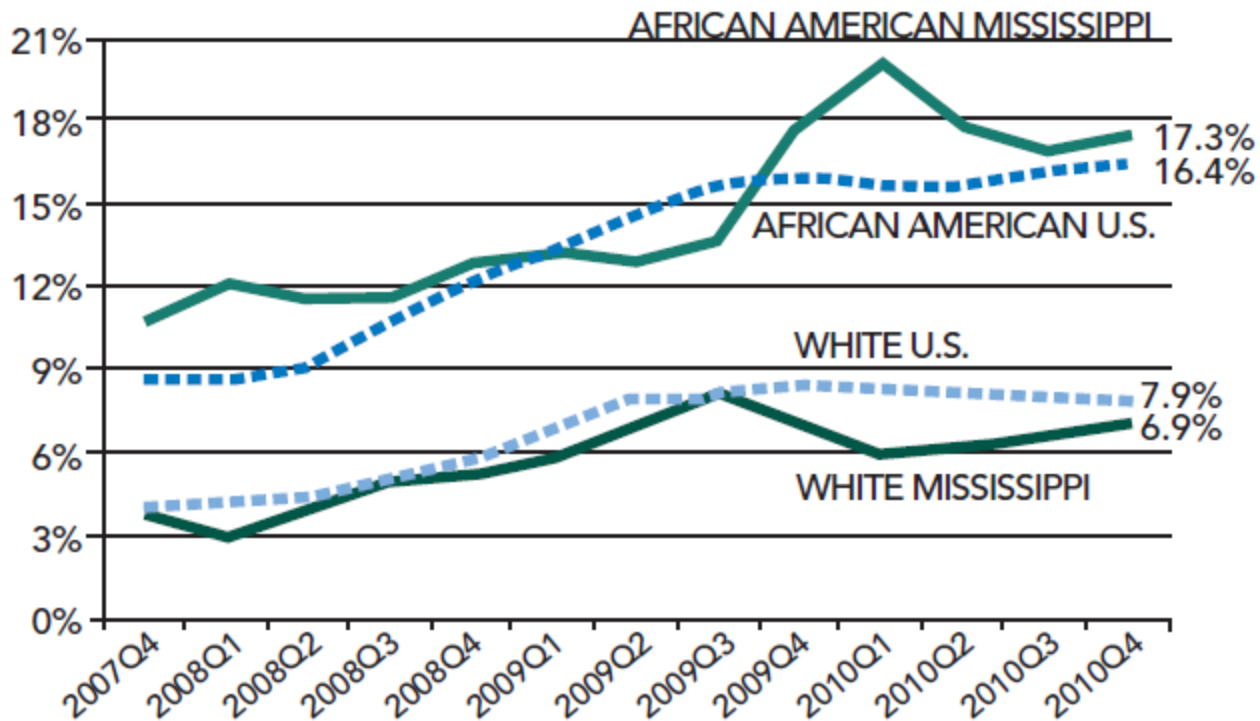


Source: Bureau of Labor Statistics

## UNEMPLOYMENT RATES IN 2000 & 2011 BY DEMOGRAPHIC



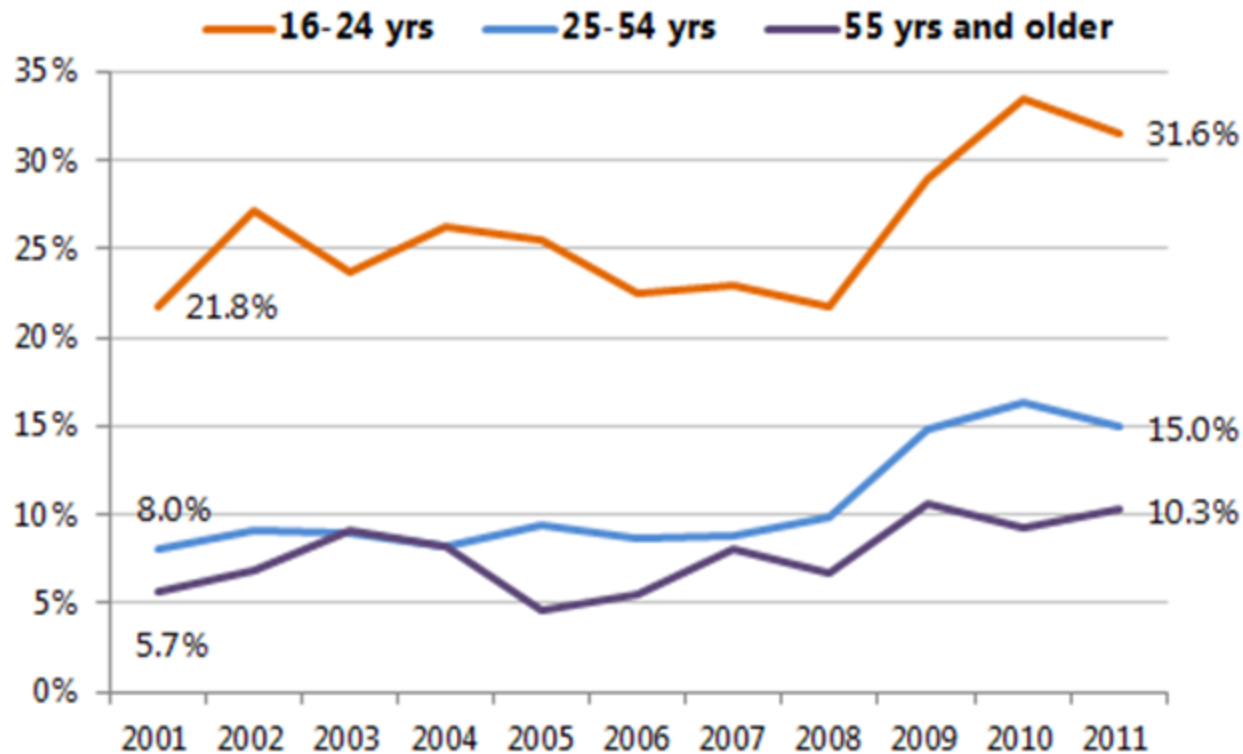
## QUARTERLY UNEMPLOYMENT RATE BY RACE Mississippi and U.S.



Source: EPI Analysis of LAUS Data

Figure 8

## MISSISSIPPI UNDEREMPLOYMENT RATES BY AGE GROUP

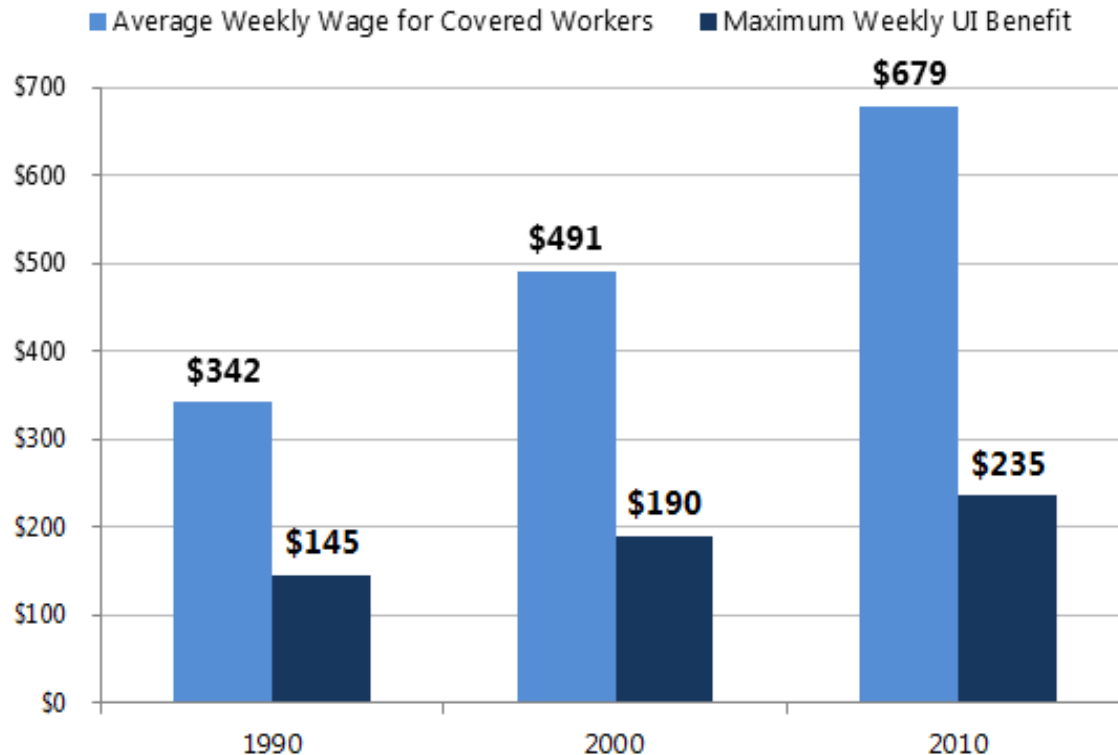


Source: Economic Policy Institute analysis of Current Population Survey data

## POLICY FOCUS: UNEMPLOYMENT INSURANCE

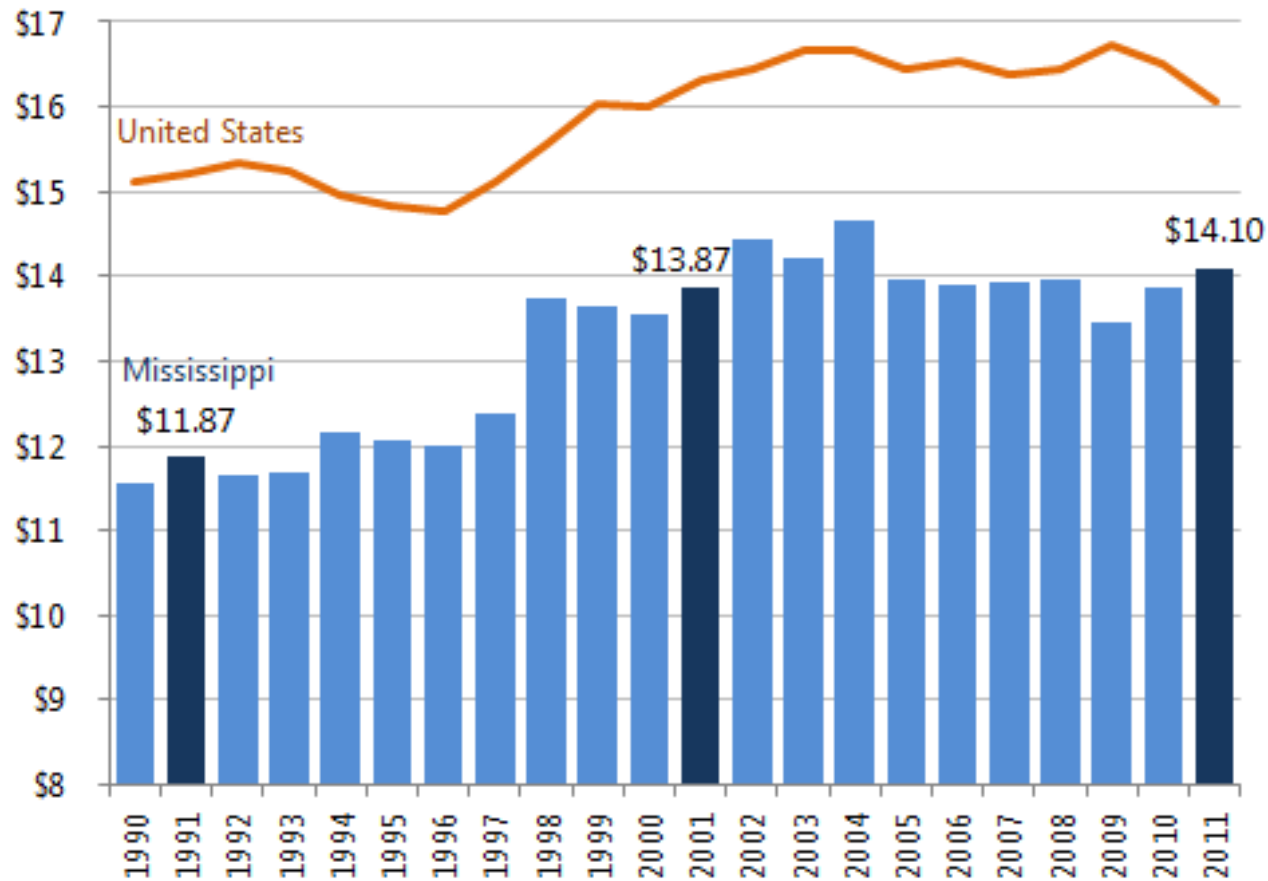
### MISSISSIPPI UI BENEFITS NOT KEEPING PACE WITH WAGES WORKERS EARN

Mississippi 1990, 2000, and 2010 (Nominal Dollars)



Source: U.S. DOL. *Unemployment Insurance Financial Data Book*.

## MEDIAN WAGES OVER THE LAST TWO DECADES

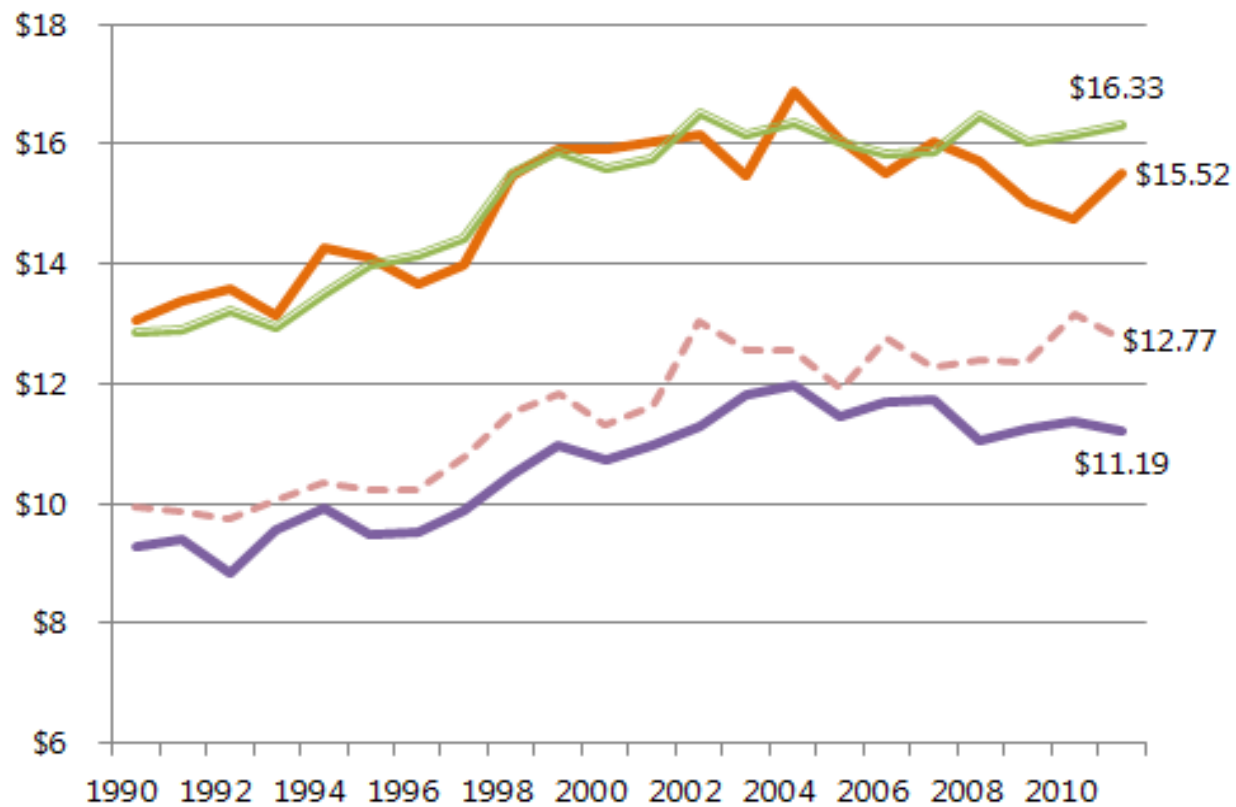




## MEDIAN HOURLY WAGES BY DEMOGRAPHIC

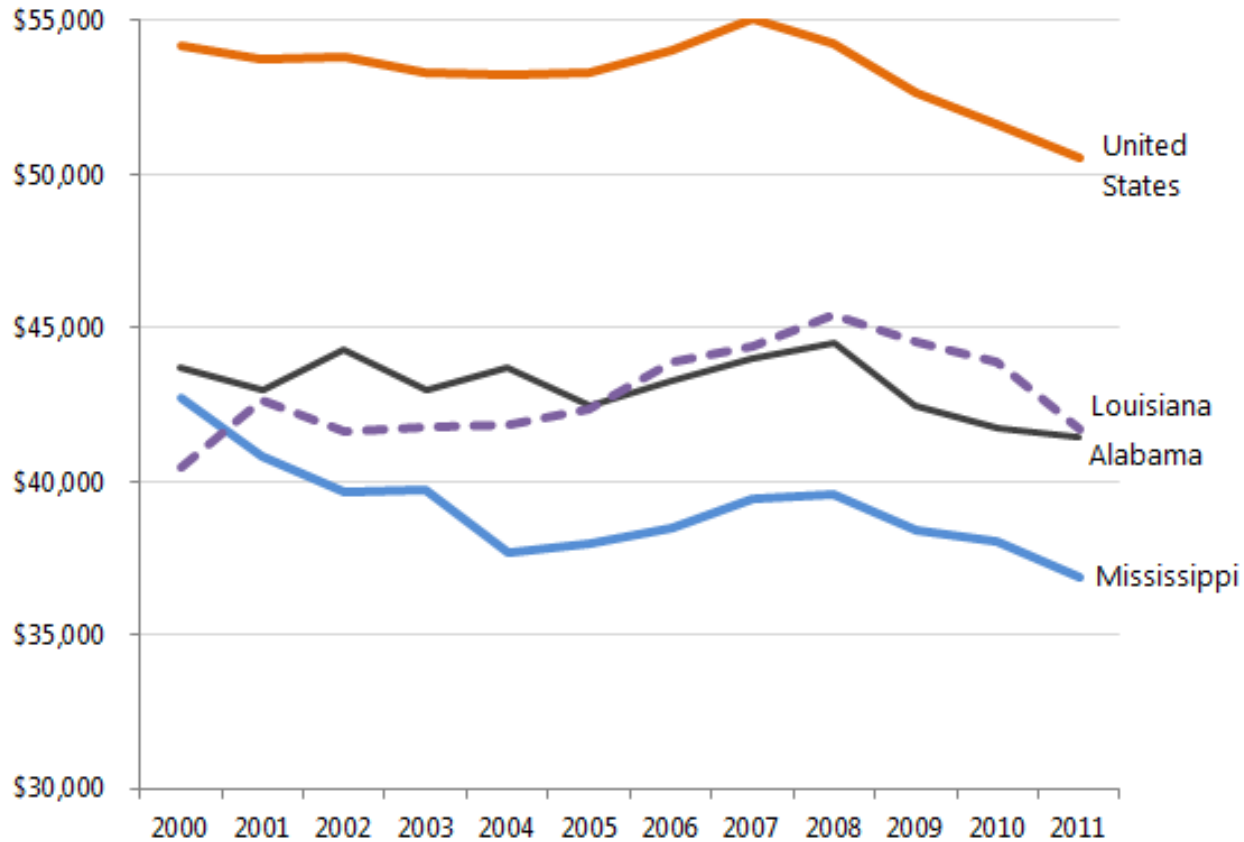
(inflation adjusted)

Male Female White African American

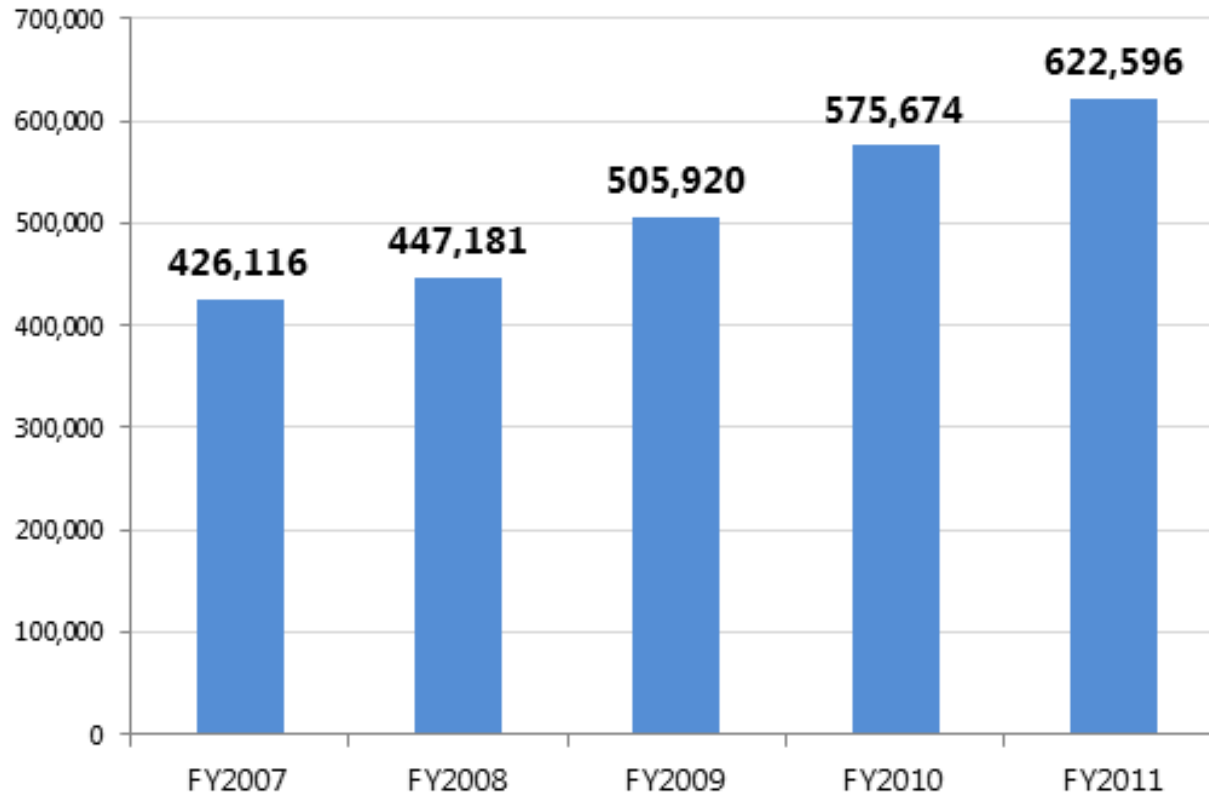


**MEDIAN HOUSEHOLD INCOME FROM 2000 to 2011**

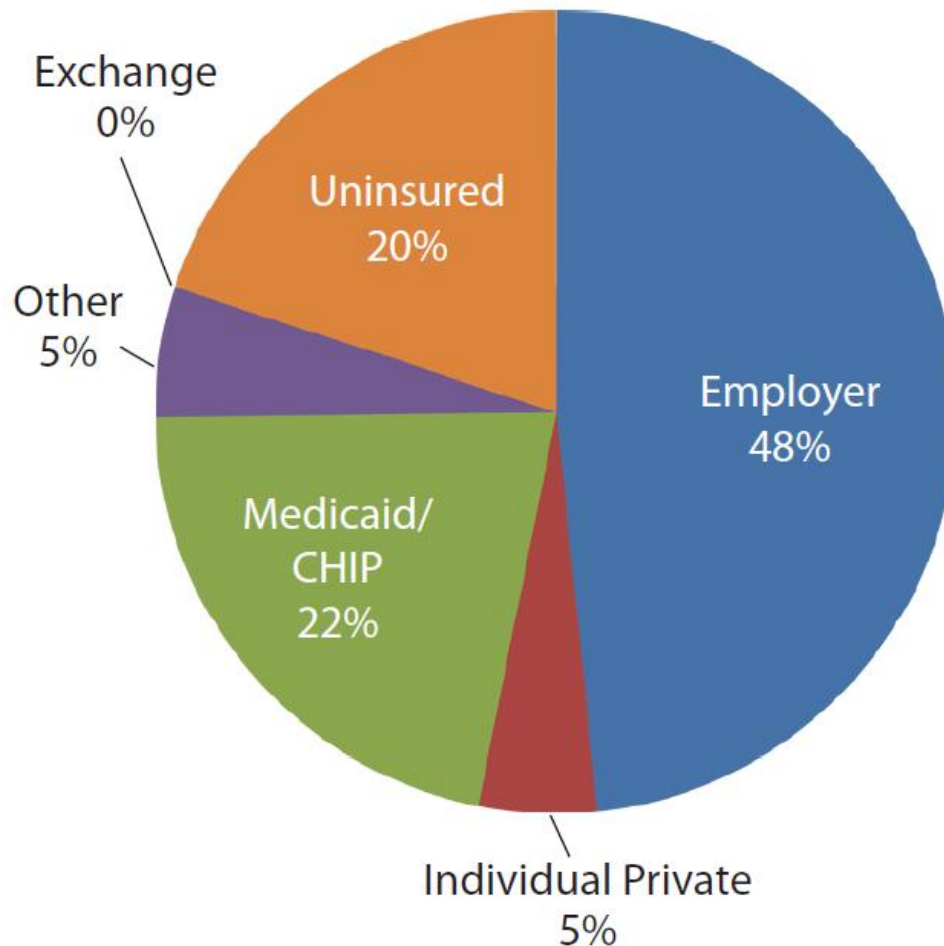
in 2011 dollars



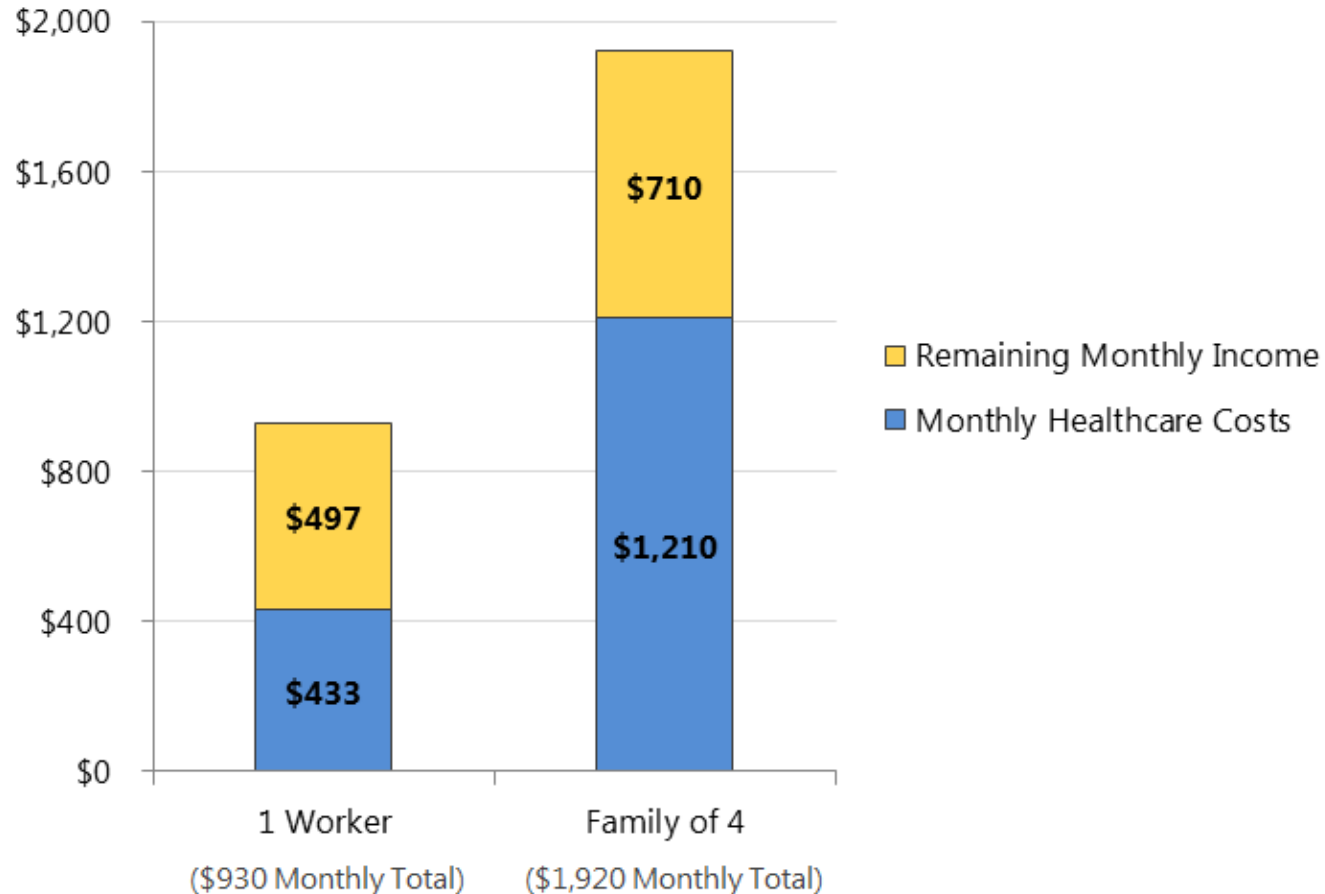
## Mississippi's SNAP Average Monthly Participation



## Health Insurance Coverage for Non-Elderly Residents



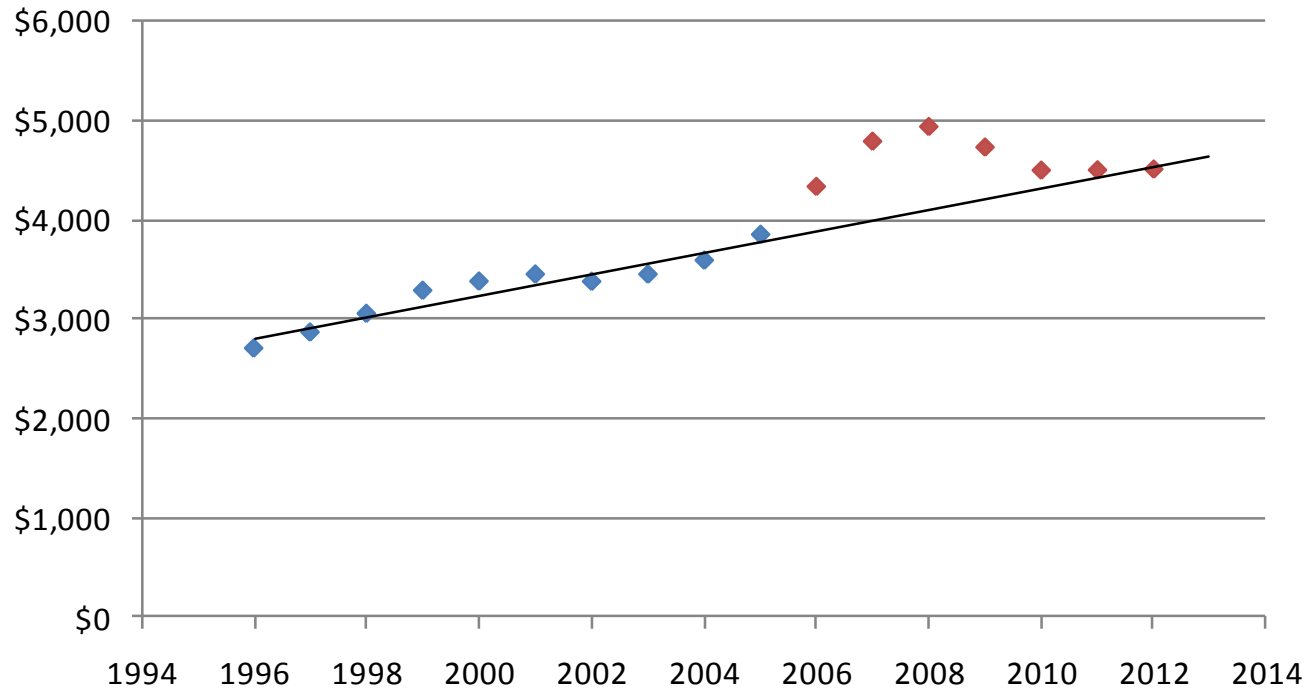
## MONTHLY HEALTHCARE COSTS WITHOUT EMPLOYER SPONSORED INSURANCE AS A PORTION OF FEDERAL POVERTY LEVEL EARNINGS



**OCCUPATIONS WITH LARGE NUMBER OF UNINSURED ADULTS EARNING BELOW 138% OF THE POVERTY LEVEL**

<b>OCCUPATION</b>	<b>2012 Average Wage</b>
<b>Childcare Workers</b>	<b>\$18,070</b>
<b>Nursing &amp; Home Health Aids</b>	<b>\$19,890</b>
<b>Cooks</b>	<b>\$19,980</b>
<b>Construction Laborers</b>	<b>\$25,190</b>
<b>Maids and Housekeeping Cleaners</b>	<b>\$18,000</b>
<b>Truck Drivers</b>	<b>\$26,410</b>
<b>Waiters and Waitresses</b>	<b>\$17,730</b>
<b>Janitors and Building Cleaners</b>	<b>\$19,880</b>
<b>Grounds Maintenance Workers</b>	<b>\$21,960</b>
<b>Carpenters</b>	<b>\$31,640</b>
<b>Cashier</b>	<b>\$18,710</b>
<b>Retail Salespersons</b>	<b>\$24,070</b>
<b>Miscellaneous Assemblers &amp; Fabricators</b>	<b>\$28,740</b>
<b>First-Line Supervisors of Sales Workers</b>	<b>\$36,650</b>

## MS General Fund Revenue Trends Before and After Katrina



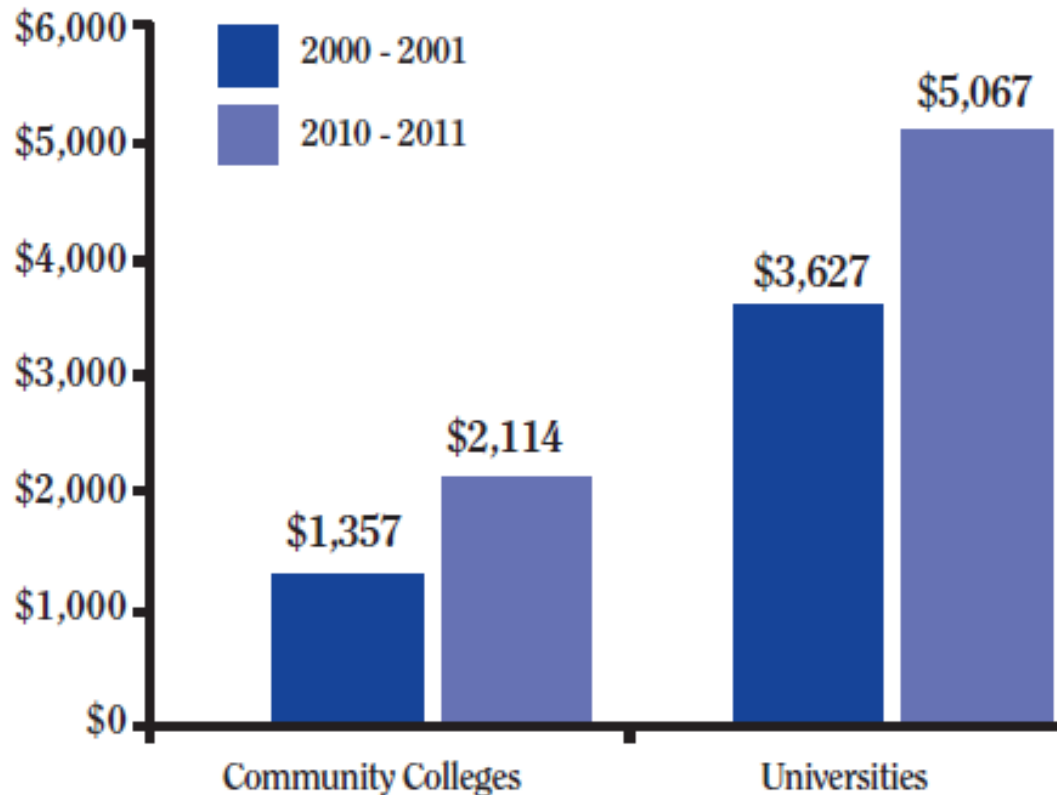
In Millions

Source: Mississippi Department of Revenue Report of Transfers

Note: \*2012 data is an estimate

## MISSISSIPPI POST-SECONDARY TUITION RISES

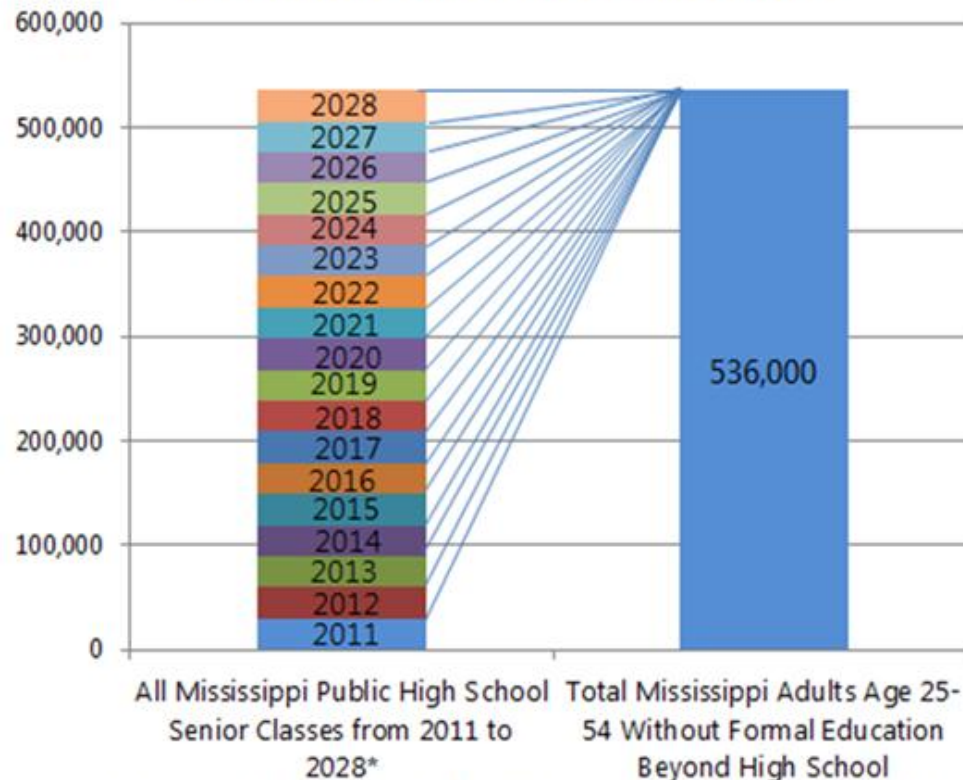
*Average Annual Tuition and Fees (2010 Real Dollars)*



SOURCE: Institutions of Higher Learning and Mississippi Community College Board.



## WORKING AGE ADULTS AND HIGH SCHOOL STUDENTS BOTH NEED TO SUCCEED IN COLLEGE COURSES



Source: Working Poor Families Project generated from the Population Reference Bureau analysis of 2010 Basic Monthly CPS. \*MEPC analysis assumes constant class sizes based on size of 2010-2011 12th grade enrollment as reported by the Mississippi Department of Education.

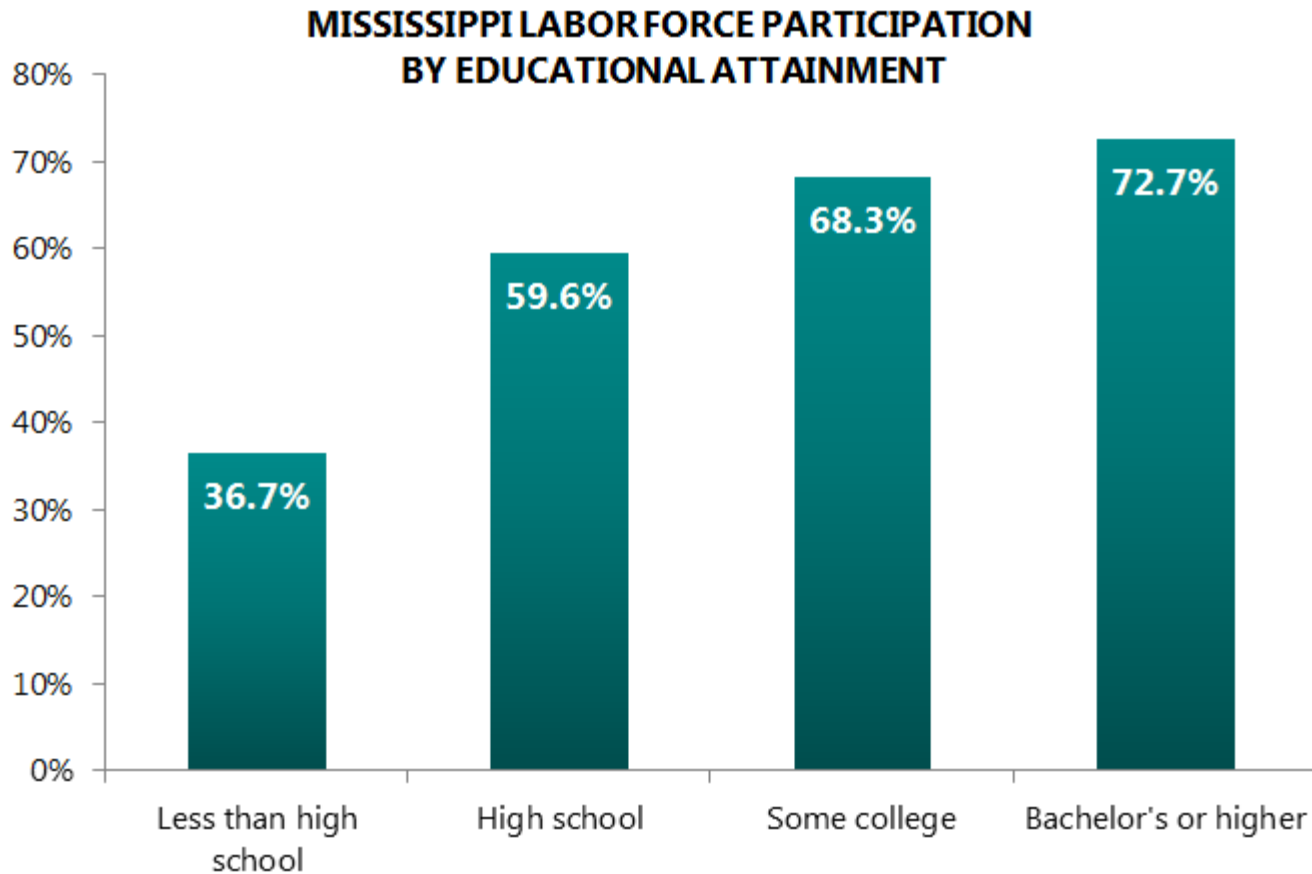
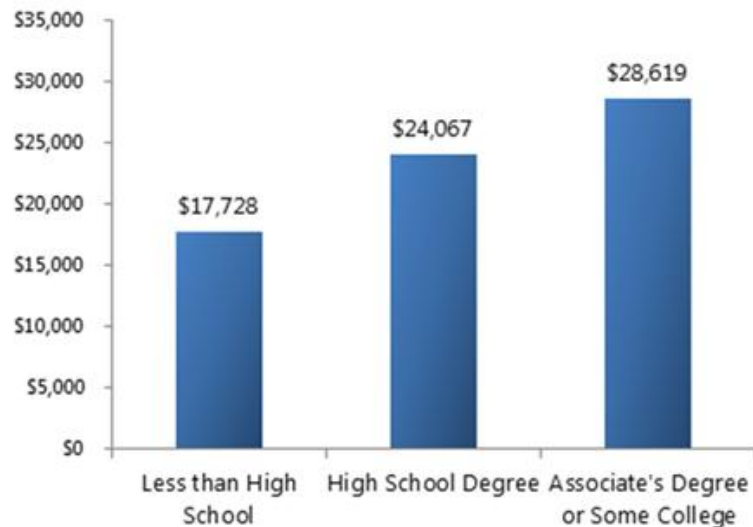
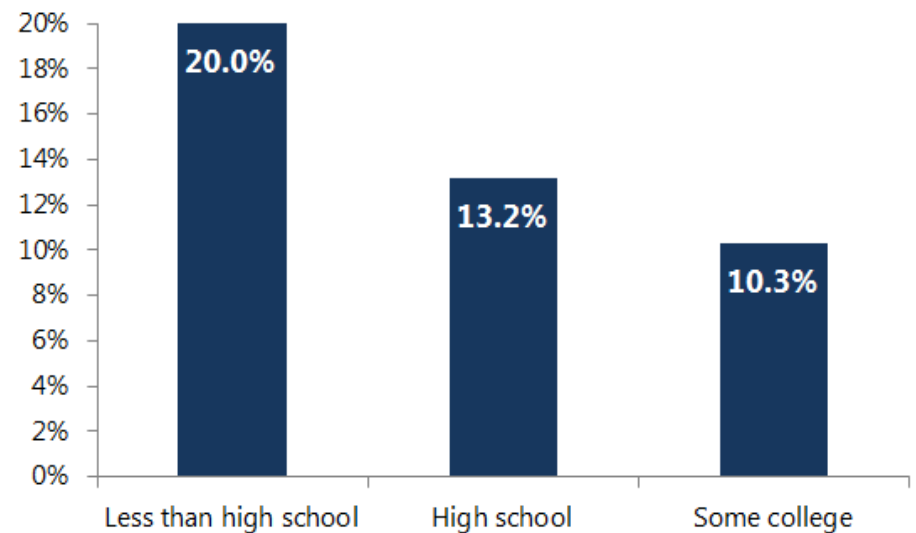


Figure 1. **MEDIAN EARNINGS BY EDUCATIONAL ATTAINMENT**  
Mississippi Workers



Source: US Census Bureau, American Community Survey, 2006-2010.

**2011 UNEMPLOYMENT RATE BY EDUCATIONAL ATTAINMENT**



## POLICY AREA: DROPOUT RECOVERY FUNDS

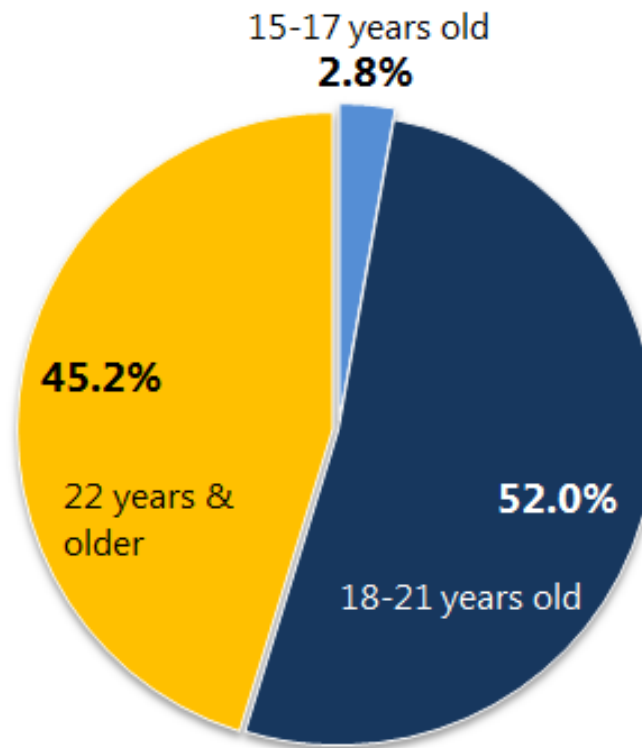
### **In 2010, college programs could use Dropout Recovery Funds for:**

- Additional instructors and staff in Adult Basic Education & GED offices
- Financial assistance for GED testing fees
- Financial assistance for students transitioning to post-secondary classes
- Graduation ceremonies and classroom supplies

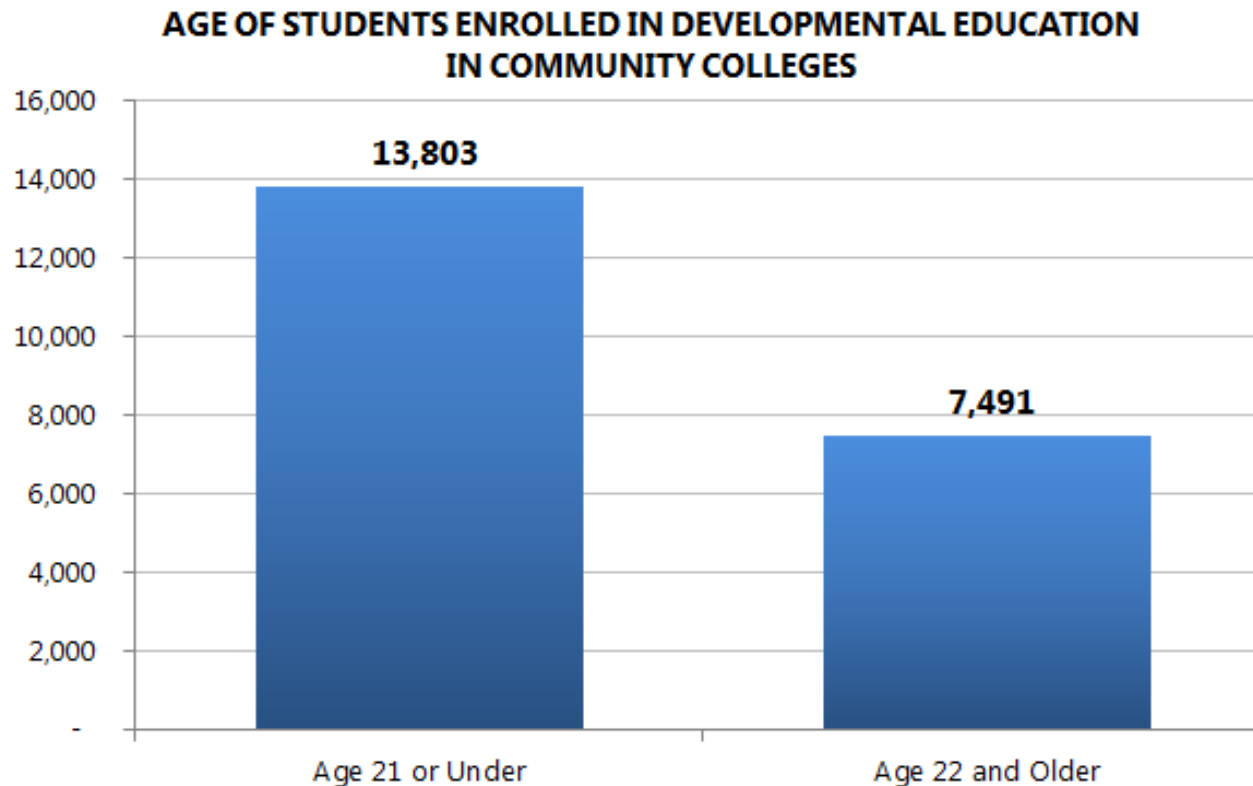
### **Increased appropriations could be used for:**

- **Support staff** dedicated to student success and transitions to college courses
- **Wrap around supports:** transportation, career counseling, tutoring & childcare
- Developing **curricula with workforce skills imbedded** in basic education
- **Financial aid** for GED students that successfully enroll in post-secondary courses

## ENROLLMENT BY AGE AT MISSISSIPPI COMMUNITY COLLEGES, 2011



## POLICY AREA: DELIVERY OF DEVELOPMENTAL EDUCATION

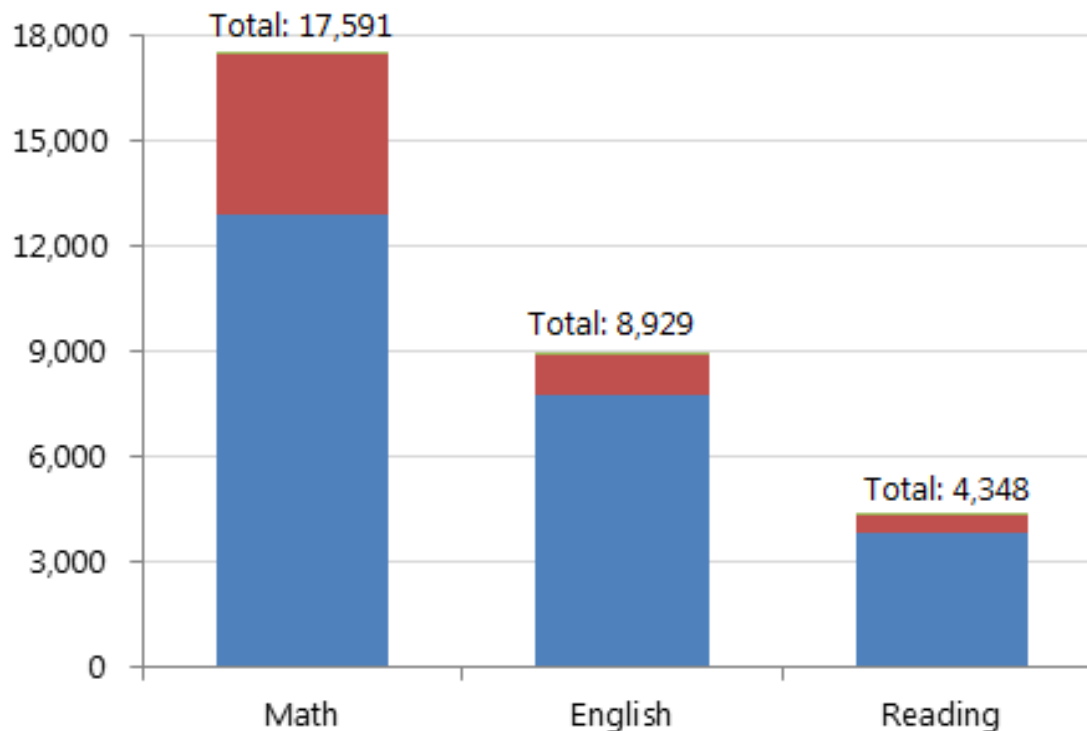


Source: Mississippi Community College Board. Division of Research and Planning, 2011.

**ENROLLMENT IN DEVELOPMENTAL EDUCATION COURSES  
BY SUBJECT AND CLASS**

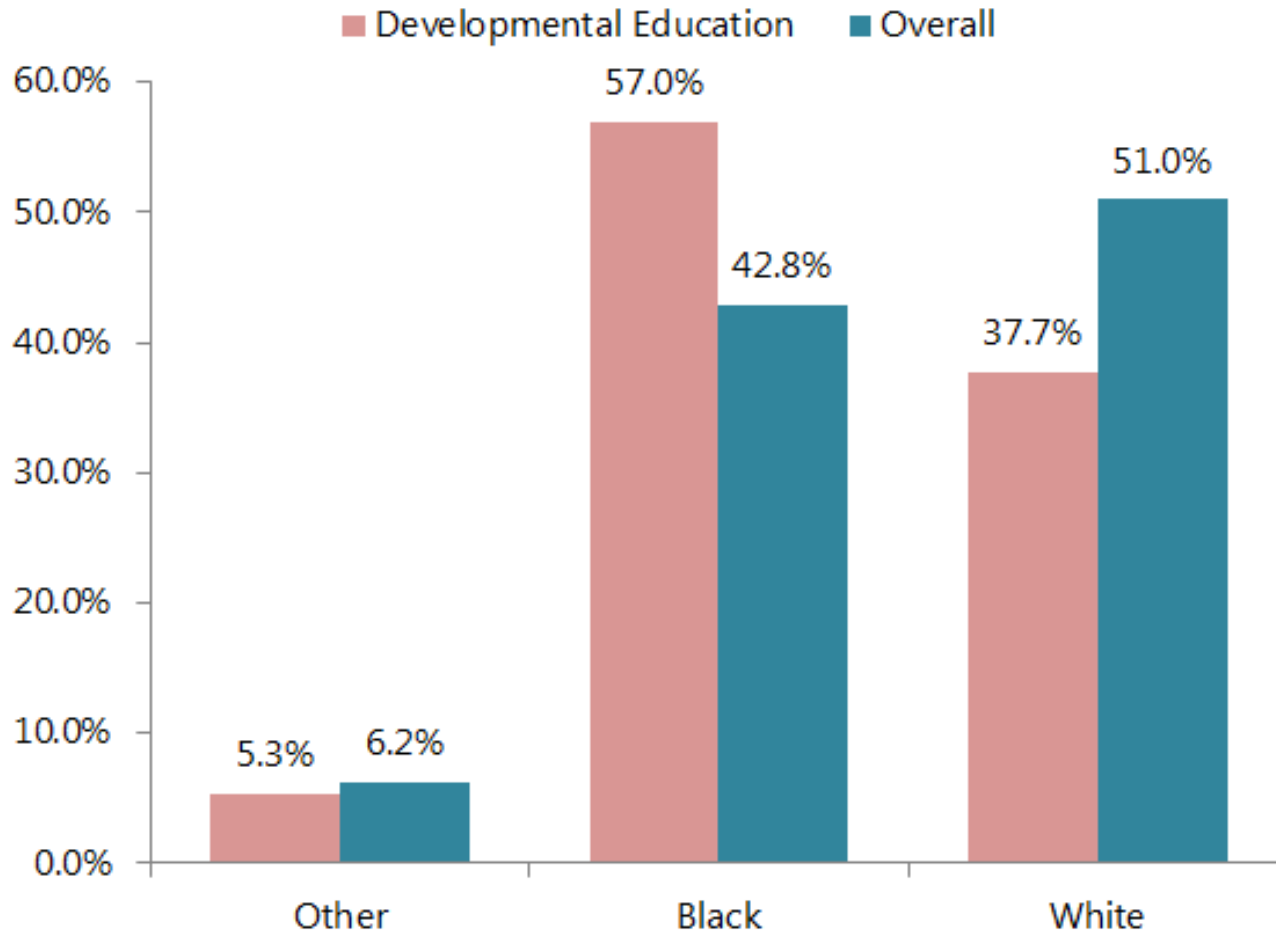
Fall 2011

■ Freshman ■ Sophomore ■ Other



Source: MS Community College Board. Division of Research and Planning. 2011.

### MISSISSIPPI COMMUNITY COLLEGE ENROLLMENT BY RACE





## POLICY AREA: DEVELOPMENTAL EDUCATION

- 1. Reform Assessment and Placement in Dev. Ed.**
- 2. Improve Course Design**
- 3. Bolster Support Services**
- 4. Strengthen Data Collection and Monitor Outcomes**
- 5. Supply Adequate Resources to Make Changes**

## More Information

[www.mepconline.org](http://www.mepconline.org)  
**Policy Matters Blog**

**Sarah Welker**  
[swelker@mepconline.org](mailto:swelker@mepconline.org)

The screenshot shows the MEPC website interface. At the top, the logo reads 'MEPC A Hope Initiative MISSISSIPPI ECONOMIC POLICY CENTER'. To the right, it says 'TIMELY CREDIBLE ACCESSIBLE'. The navigation bar includes 'Home', 'About Us', 'Policy Areas' (highlighted with a blue circle), 'Publications', 'Policy Matters Blog', 'Media Room', 'News', 'Donate', and a search box with a 'GO' button. A dropdown menu for 'Policy Areas' is open, listing 'Budget & Tax', 'Asset Development and Financial Inclusion', 'Income & Working Families' (highlighted), and 'Medicaid Expansion and Health Coverage'. Below the menu, there's a featured report titled 'Build Crede' with a sub-header 'STRENGTHENING A TO FUTURE ECONOMIC'. The main content area features a report titled 'State of Working Mississippi 2012: Updated Presentation' dated October 18th, 2012. The text states: 'In January, MEPC released the State of Working Mississippi, 2012. This abbreviated presentation updates data on jobs, wages, and household income with information from 2011. The slides also trace changes in the need for critical family supports like SNAP (formerly... [read more](#))'. To the right of the report, there's a sidebar with 'Browse our latest publications >>', 'Connect with us' (Facebook, RSS, Twitter, E-mail Alerts), 'Basic Economic Security' (Basic Economic Security Calculator, Basic Economic Security County by County), and 'MEPC Annual Policy Conference' (2012 Annual Policy Conference, Hodding Carter III 2011 Keynote Speech, 2011 Conference Presentations, Dick Molpus 2010 Keynote Speech, 2010 Conference Presentations, 2009 Conference Presentations).